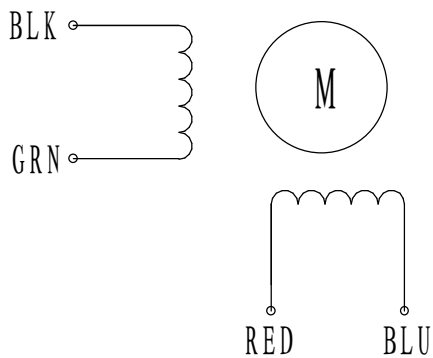


HIGH TORQUE HYBRID STEPPING MOTOR SPECIFICATIONS

General specifications		Electrical specifications	
Step Angle (°)	1.8	Rated Voltage (V)	7.28
Temperature Rise (°C)	80 Max (rated current, 2 phase on)	Rated Current (A)	0.28
Ambient Temperature (°C)	-20~+50	Resistance Per Phase ($\pm 10\%$ Ω)	26
Number of Phase	2	Inductance Per Phase ($\pm 20\%$ mH)	19.2
Insulation Resistance (M Ω)	100 Min (500VDC)	Holding Torque (N.cm)	6.5
Insulation Class	Class B		
Max.radial force (N)	28 (20mm from the flange)		
Max.axial force (N)	10		

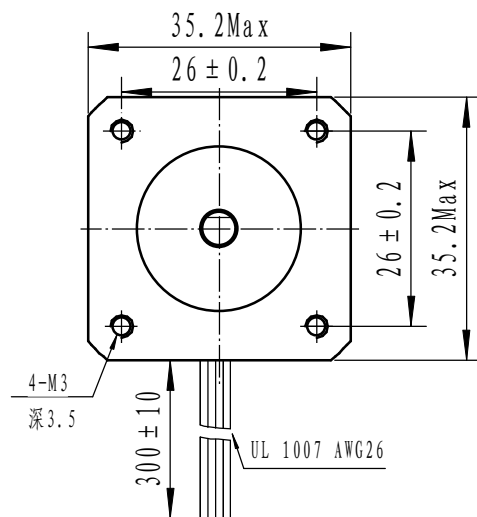
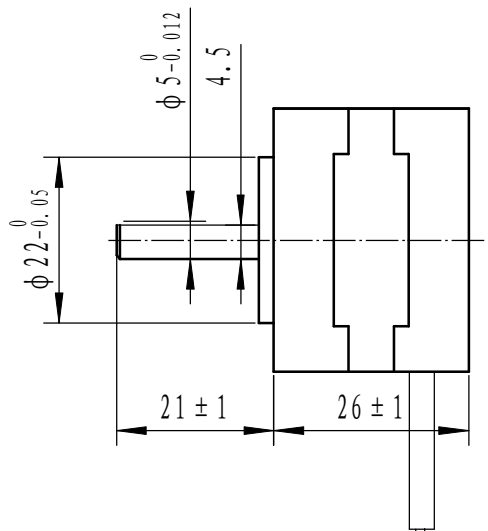
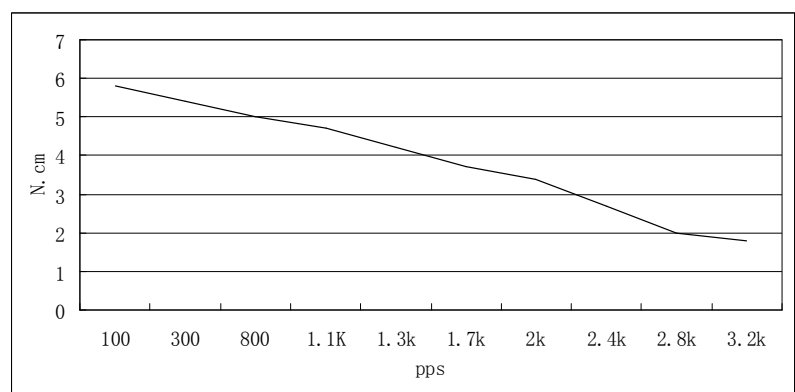
● Wiring Diagram :



Dimensions:
(unit=mm)

● Pull out torque curve:

VOLTAGE: 24VAC, CONSTANT CURRENT: 0.28, HALF STEP



					SY35ST26-0284A	TECHNICAL CONDITIONS
REV	REVISIONS	DESCRIPTION	BY	DATE		
DRAW	2012/12/28				CHANGZHOU SONGYANG MACHINERY & ELECTRONICS NEW TECHNIC INSTITUTE	030026011
CHECK						
APPROVE						